

00000014184 083 WI LI 120599
 Mitchell G Bent
 1282 Monterey
 De Pere WI 54115



NON-PROFIT ORGAN.
 U.S. Postage
PAID
 Shawano Wis.
 Permit No. 18

M WISCONSIN TROUT UNLIMITED

REFLECTIONS

Fall 1988

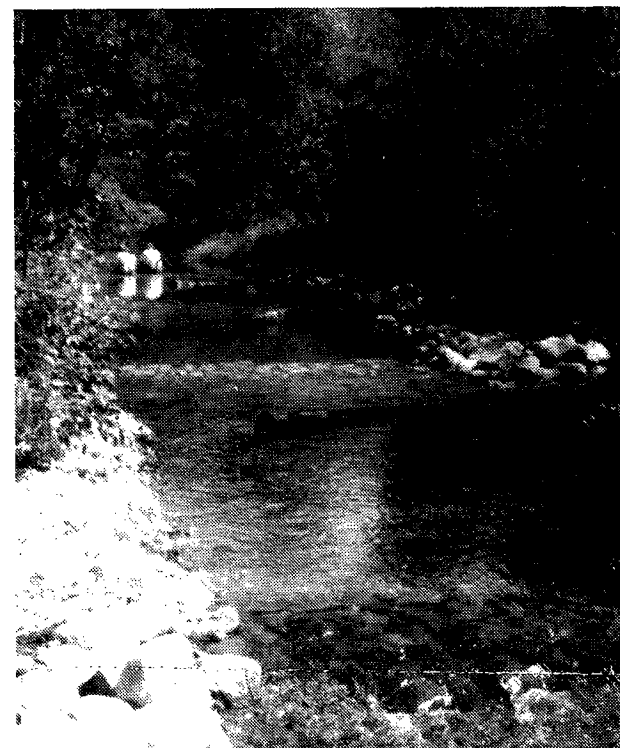
Waupee Creek Improving

by Mitch Bent

Waupee Creek is a small, brush-lined creek in northern Oconto County which originates near Mountain and flows into the North Branch of the Oconto River. For many years, it had been a popular creek for native Brook trout and some Browns.

However, over the past ten years, Waupee Creek has suffered a decline in its trout population due to a variety of factors, including excessive beaver activity, encroachment of brush along the creek banks, and other factors. Locals who knew the stream well lamented over the way that the Waupee had gone downhill.

In 1987, the DNR (Marinette office) implemented projects designed to bring back the trout fishery of Waupee Creek. Using Inland Trout Stamp funds, U.S. Forest Service Challenge Grant funds, and volunteer labor from the Green Bay Chapter of Trout Unlimited, the DNR undertook projects to rehabilitate the Waupee. The first project was creation of a "sand-trap" in the streambed. This is a hole about five to six feet deep and several yards long that acts as a collection basin for silt and sediments. This prevents materials from going downstream and covering potential spawning areas. This concept has been utilized on some streams in Michigan's Upper Peninsula, and has worked well.



Logs placed over spawning areas of Waupee Creek help to provide hiding cover for spawning trout from predators.

Continued on page 2.

From The Chairman

by Dick Wachowski

Last month I had the opportunity to testify before Representative Black's Special Committee on Natural and Recreational resources, presenting Trout Unlimited's views on future directions the state should take in preserving and enhancing those resources. One of the major objectives of that committee is replacing or revising the ORAP and LAWCON programs whereby funding provided for the purchase of land deemed necessary for preservation or recreational purposes.

It has become evident that the government units are not in the position to purchase or obtain anywhere near the amount of land they have previously. Unfortunately, this means that development pressure will result in the destruction and despoliation of many cherished natural resources. The current emphasis on fiscal restraint in government makes it unlikely that significant increases in the current levels of spending will occur, although I certainly hope that the state does something to replace the programs mentioned above.

There has been a growing movement toward private purchase of land for public benefit, headed by the Nature Conservancy. It is my belief that this trend will accelerate in the future. There is serious discussion taking place by Trout Unlimited's national board of directors about establishing a similar conservancy program by our organization. Of course, any such program would concentrate on cold water resources. You can expect to hear more about this program in the near future.

At the state and local level, similar programs are feasible. Many of our chapters have made purchases of land and/or easements on trout streams. It may surprise many of you to know that you, as a member of Wisconsin Trout Unlimited, own land abutting trout streams in Marinette, Oconto, Shawano, Waushara, Dunn and other counties in the state. These lands are open for public use and in many instances are the locations of substantial stream improvement work that result in excellent fishing.

Continued on page 2.

State Council Banquet Set For January 21, 1989

Prepare for an enjoyable, relaxed evening with good friends, good food and a quality selection of prizes.

The sixth annual Wisconsin Trout Unlimited State Council Awards & Conservation Banquet will be held Saturday, January 21, 1989, at Paper Valley Hotel & Conference Center, Appleton, Wisconsin.

Social hour begins at 5:00 p.m. with dinner at 6:30 p.m. Tickets are \$25.00 each or \$45.00 a couple. Since only a limited number of tickets will be available at the door, send for your tickets *now* with the ticket order form enclosed in *Reflections*. All checks should be payable to Trout Unlimited.

Hors d'oeuvres will be served at 5:00 with complimentary beer (i.e., FREE BEER) courtesy of Kay Distributing, De Pere and Coors Beer. A sirloin of beef dinner with salad, appetizer, roll, potato, vegetable, beverage and dessert will follow.

Prizes:

More door prizes will be offered this year, along with a selection of raffle prizes that includes a JVC VHS VCR, a lady's necklace/pendant, Caddis float tube, \$100 cash, portable fish locator, gas-powered ice auger, and more.

Separate raffles will be held for custom-made fishing rods and a selection of firearms by Daly, Remington, Ruger and others.

Auctions:

Auctions will consist of live and silent varieties of items and include a good mix between limited edition art prints and non-art work such as a custom-made quilt, special custom bamboo fly rod, and bird carvings.

Donations:

Donations for prizes and for cash to purchase major raffle prizes will be needed. Levels of cash donations include:

Continued on page 4.

Northeast Regional Report

Trout plagued by drought, beavers

By Mitch Bent

The Northeastern Wisconsin T.U. Region has not met since late April, as reported in the last issue of *Reflections*. The Region will meet in early December to discuss a variety of issues affecting trout resources in our area.

Plenty of things occupied our chapters' time. The devastating drought of 1988 threw a real scare into many TU'ers in our area. The effects of the drought have not been quantified, but we feel that some very bad things happened to our trout populations due to low water levels and high water temperatures.

In addition, I received several reports of heavy angling pressure on trout congregated in streams with cool spring seeps. I called Doug Morrisette, new head of DNR Bureau of Fisheries, and asked him what DNR was doing about the situation. Our conversation was unpleasant. While I intimated that an early season closure might be useful in sparing the trout that had survived the onslaught of hellfire heat and low water, he felt that "monitoring" the situation was a sufficient reaction to the situation. I could not have disagreed more.

Another situation affecting trout populations in northeastern Wisconsin is the expanding beaver population. With pelt prices heading ever downward and trapping activity decreasing, beaver populations have become completely out of control in many areas.

In late September, I toured streams not less than five miles from Rhinelander with former T.U. member Wally Cooper. Wally has long advocated policies to control beaver populations, and he is quite upset about the current situation. On every creek that we crossed that day, we found a multitude of dams. Oneida County work crews were unclogging culverts and removing dams, actions that are good only temporarily, until beavers rebuild their structures.

What DNR is doing about the situation is unclear. Some work is being done on streams which DNR has projects on.

The Federal government, under the auspices of the U.S. Forest Service and APHIS (an animal control arm of the USDA) has initiated a program to remove beaver from streams, but the program is in its infancy. The major rivers of the northeast, (Peshtigo, Pine, Pike, and Popple) have tributaries that are jammed with beaver dams. These dams prevent the life-giving cool waters from reaching the main rivers, and result in increased water temperatures in summer, lowered reproduction capabilities and sites for trout, and stream siltation. Creel census workers on the Peshtigo have admitted that the river's main problem relative to trout population is the number of beaver dams on all little feeders entering the Peshtigo.

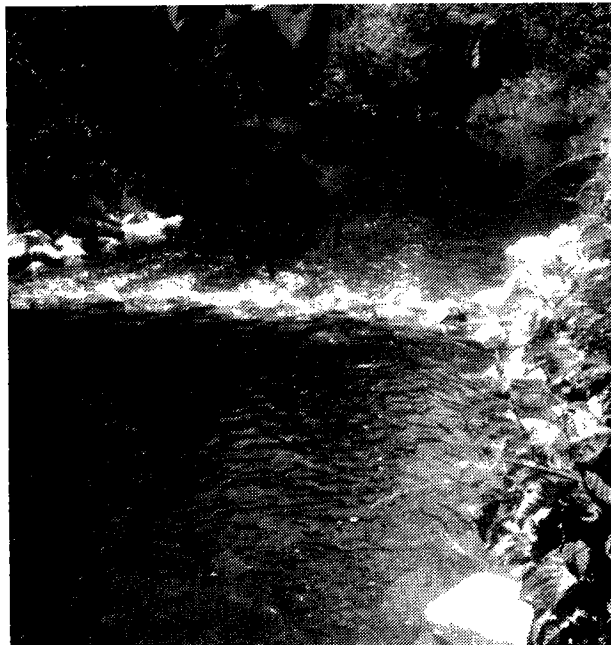
If DNR and the U.S. Forest Service do not speed up their work in controlling beaver numbers, our already depleted trout fishery in northeastern Wisconsin will continue to shrivel.

I also met with U.S. Forest Service personnel in Rhinelander to discuss the potential of the Forest Service "Challenge Grant Program," which sets up opportunities for groups like Trout Unlimited and coordinates and funds stream habitat improvement projects. The Forest Service provides matching funds, and labor. Dredging was completed on the Elvov Springs in far northern Forest County this summer, via Challenge Grant and DNR. Also, a project on the Waupee Creek in Oconto County (see story in other part of paper) was partially worked through the Challenge Grant. The Challenge Grant Program also appears to be a good way for T.U. chapters to funnel their hard-earned dollars, raised through banquets and other functions.

Waupee Creek Improving cont. from pg. 1.

In 1988, DNR and the Green Bay T.U. Chapter, with assistance from Marinette County and Oconto River T.U. chapters, and members of the Wausaukee Chapter of the Izaak Walton League, spent several Saturdays building rock sills and spawning riffles to enhance trout reproduction in the stream. Rock sills were made by stringing rocks and boulders across the creek width. Spawning areas were created between the sills by putting down layers of two inch gravel that was covered at the top with pea gravel. This created riffle areas and spawning sites. Logs were inserted into the creek to provide the trout with hiding cover from predators.

DNR will monitor the site this fall to determine the number of trout in the spawning areas. Hopefully, the project will show enough success to give impetus to trying such projects on other streams.



Completed rock sill with spawning areas above and below it.



Janet Smith prepares to pass heavy rock to Rollie Buss for placement in rock sill on Waupee Creek.

From The Chairman cont. from page 1.

Now may be the time to expand this area of our operation. If any of you are aware of available property important to the preservation, protection or enhancement of our cold water resources, contact your local chapter or the State Council. If you are owners of this type of property and wish to see it preserved, feel free to contact your chapter or the State Council regarding a possible donation. After all, ownership makes the protection of the resource a lot easier, and that's our real goal.

Annual Wolf River Scatter-Plant A Success

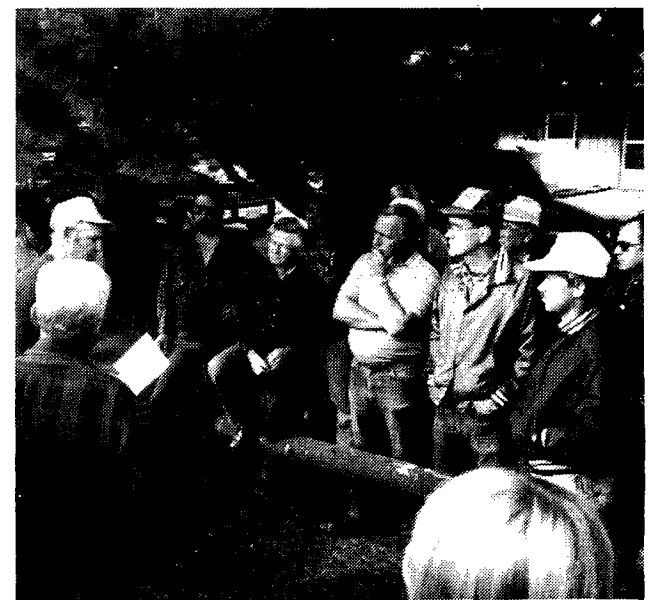
On September 10, members and friends of T.U. gathered at Herb Buettner's Motel in Langlade to assist in the annual scatter-stocking of Brown trout in the Wolf River. This project was begun by "Cap" Buettner, Herb's deceased brother and founder of Trout Unlimited in Wisconsin.

Approximately 15,000 Brown trout were stocked by the participants. With the unique scatter-stocking method, trout are stocked one or two at a time in different locations in the river instead of being dumped off at one point.

Using rafts provided by Herb Buettner, the workers fill the rafts partially with water and put several buckets of hatchery-raised trout into the raft. Traveling two-to-a-raft, the workers drift downstream with the current and selectively place trout into choice spots in the stream. By constantly aerating the water in the raft with new water, workers keep trout alive for the entire float, which lasts several miles. This method of stocking trout produces a better fish distribution.

The stocking program is always a boon to the Wolf River, but was especially important this year because of the devastating drought which

caused high trout mortality. The scatter-planting will help restore the Wolf's trout population, along with supplemental stocking of trout by DNR.



Herb Buettner (left, center) gives the crew instructions for stocking trout in the Wolf River.

Chapter Reports



John Pooler caught the biggest fish of the day--a 19.5" Rainbow, from a game farm pond north of Appleton.

Fox Valley Chapter

The Fox Valley Chapter had a busy summer and fall! Our 10th Annual Handicapped Outing treated 18 handicapped persons to an afternoon of fishing and a picnic.

We hope to get involved with another handicapped project at the Bubolz Nature Preserve north of Appleton, Wisconsin. We will share information on this project as it unfolds.

Ten chapter members and guests traveled to Fort McCoy for a weekend of fishing and stream improvement work this summer. Not too many fish were caught, but approximately one-eighth mile of stream was improved. This brings our two year total to one-quarter mile of Tarr Creek that has been nicknamed the TU section by local folks.

Our summer fishing outing was hampered by low water and hot weather. We didn't hear of any fish being caught, but I think that someone released a bratwurst!

A contingent of Fox Valley Chapter members helped with the Wolf River chapter's scatter planting this fall. This event was also hampered by low water.

A small group of members put the finishing touches on our project on Davis Creek. This is a small spawning creek in Waushara County. Our thanks to Elward Engel for his support and help with this project.

A presentation by Elward Engel kicked off the Fox Valley Chapter fall season of meetings. Engel explained how rough the summer drought was on trout streams that were surrounded by human developments. The streams in parts of our area that were *not* surrounded by farms and developments were relatively unaffected. We have to ask ourselves, "Was it nature or man that devastated the streams this summer?" We sure played a part in it.

Lakeshore Chapter

Installation of two gates at Camp Sinawa was completed in August. With our summer project dates completed, we will meet at Club Bil-Mar in Manitowoc on the second Monday of each month at 7:30 p.m.

Lou Jirikowic treated members present at the September meeting to a fly-casting demonstration. Upcoming events planned include our annual fundraising banquet on April 15th and Beginning & Advanced Flytying classes scheduled for February.

Northwoods Chapter

Chapter Project Chairman, John Zatopa, met with Max Johnson of the DNR regarding restoration of the springs and stream improvement for the North Branch of the Prairie River.

We also met with representatives of the Ice Age Trail to plan and assist in the construction of wood walkways in the marshy areas where the Ice Age Trail crosses the North Branch of the Prairie River. This project will be started in the Spring of 1989.

Southern Wisconsin Chapter

This year's project work was completed by fifteen chapter members who assembled several lunger structures on the Black Earth creek. The pallet-like structures developed by Dave Vitrano of La Crosse, were put in place by the DNR on the Ken Zander farm and in one other site on the creek.

The two sites in conjunction are being viewed as a demonstration project showing the usefulness of the lunger structures in helping to contain soil erosion and providing habitat for trout. Not only did the chapter provide labor, but also donated money and secured a lease for Mr. Zander's portion of the creek.

Our chapter members are now looking forward to two upcoming events. On December 13th, we will have our Service Award Banquet honoring both members and several non-members for their service to Trout Unlimited.

Our annual Ice Breaker Fishing Clinic will take place on January 28th at the Park Ponderosa in McFarland. This is our major fund-raising event of the year. Our featured speaker will be Dick Talleur. There will be door prizes and many high quality raffle items. The doors will be open at 9:00 a.m. and lunch will be available. The program will end with raffle drawings at 4:30 p.m. New chapter officers were elected in September. They are President, Dick Berge; Vice President, Sal Maglio; Secretary, Linda Anderson; and Treasurer Buzz Menz.

Shaw-Paca Chapter

The Shaw-Paca Chapter of TU had a busy season of activity. In April, chapter members assisted the DNR in scatter planting sections of the Red River. The chapter also planted sections of the Tiger, Hydes and Mill Creeks. The area on the Tiger Creek was designated a children's fishing area. In June several work days were held at our fishing lease area. Half logs were added and old ones adjusted on Hydes Creek; brushing was done and brush bundles were placed on the North Branch of the Embarrass River. Local Boy Scout troops assisted with the brushing. Much more work should have been done but our severe drought and high water temperatures made such work harmful to the fish.

The chapter has purchased a jet pump to assist us in our future work projects. To transport tools and equipment to the projects site, a van has been purchased. We hope to convert this ex-bakery truck into a stream improvement van this fall and winter. A copier has also been purchased to speed up our mailing process. Our video program is expanding with the purchase of ten more videos. These are available for rent to non-members and free to members.

With the return of cool weather, our efforts will now turn towards our annual banquet.

Oconto River Chapter

Our summer stocking program was held off due to the drought, but when planted, the browns were 12" to 16" in length. With any luck, they should winter in a deep holes and provide some lucky anglers some fine battles next spring.

Twenty-five hundred fat Brook trout were planted on September 24th on the Linzy, Pecor, Main, Christy, and a few private unmentionable top secret holes.

The chapter is interested in acquiring an old mobile home carriage or suitable trailer for mounting a 8' x 30' fiberglass tank. Call Lyman Wocking at 414-855-2889 or Mike Ascher at 414-855-6061.

Mountain Spring ramp is nearly completed. NE Region chapters may send checks or your commitment to Mike Ascher 6196 Hwy G, Gillett WI. 54124.

Also completed was the rip-rap at Underhill boat landing. We will soon begin to sand the sand trap on Christy Brook downstream from the City of Gillett, and to look at the possibility of digging holding holes on the main lower Oconto River.

Green Bay Chapter

During the summer, the Green Bay Chapter kept busy with a variety of trout stream projects. Foremost was construction of spawning riffles on Waupee Creek near Mountain in Oconto County (see accompanying story, pg. 1).

The chapter also cleared brush on the North Branch of the Embarrass River near Bowler, where the river flows through land purchased by N.E. Wisconsin T.U. chapters.

Members participated in a stream brushing project on Forbes Creek east of Lakewood in Oconto County. Bank sodding was undercut on a stretch of Wisconsin Creek in Florence County, northeast of Tipler.

Several members also participated in the annual Wolf River scatter-planting of Brown trout in September.

The chapter is pursuing easements along property which borders Little Wausaukee River in Marinette County, and coordinating plans with the U.S. Forest Service for brush bundle projects on Hills Pond Creek and Forbes Creek in Oconto County.

Green Bay T.U. has appropriated \$3,000 to fund an intern study of the Wisconsin-side tributaries of the boundary Brule River. Since the acid mine water pollution problem of the boundary Brule is being resolved, fish managers from Wisconsin and Michigan are anxious to begin habitat improvements on that river. Data is needed on all tributaries to the Brule. Sportsmen's clubs in Iron County (U.P., Michigan) are volunteering their efforts to tabulate stream data on Brule River tributaries coming from the Michigan side.

The chapter appropriated \$500 to continue funding the fishery research program in Yellowstone Park.

Letters of opposition were sent on the proposed withdrawal of 80 acres from the Machickanee Forest in southern Oconto County for a solid waste dump site.

The site is less than one-half mile from Brehmer Creek, a small Class I trout stream. The site is also situated near a water table very close to the surface of the land.

1989 Wisconsin Trout Unlimited

6th Annual Awards & Conservation Banquet

Saturday, January 21, 1989

The Paper Valley Hotel & Conference Center
333 West College Avenue

Appleton, WI

Many fine Door Prizes
Wide Array of Great Raffle Items
Exceptional Auction Pieces

Firearms
Fishing Gear
Custom Rods

Social Hour at 5 p.m., including complimentary beer
and hors d'oeuvres

Dinner at 6:30 p.m., including roast sirloin of beef, potato,
salad, vegetable, roll, beverage & dessert

Ticket Prices: \$25 each or \$45 per couple

State Banquet continued from page 1.

SPECIAL SPONSOR - \$200 (receive limited edition art piece plus complimentary banquet ticket)

SPONSOR - \$100 (receive complimentary banquet ticket)

DONOR - less than \$100

Individuals wishing to make cash or merchandise donations toward the banquet should contact Mitch Bent, 1282 Monterey Trail, De Pere, WI 54115, 414-336-4983.

People who would like to donate art work or other auction items, contact Jerry Weatherwax, Route 2, Box 168, Marion, WI 54950, 715-754-5642.

All contributors will receive recognition in the banquet program for their generous support.

Accommodations in the Appleton area:

Super 8 Motel	414-731-0880
Exel Inn	414-733-5551
Roadstar Inn	1-800-445-INNS

Paper Valley Hotel will offer special rates for overnight stays and a weekend package deal. Call 1-800-242-3499 to inquire.

Your support for the State Council Banquet helps the Council carry out its responsibilities and conservation activities for the coming year. We look forward to seeing another good turnout of T.U. members and friends this year!

Winter Ice Breaker

Saturday, January 28, 1989

9 a.m. to 5 p.m.
Park Ponderosa Ballroom
Mc Farland, WI
(Just outside of Madison)

Dick Talleur, Speaker
Fly-tying - Raffles - Door Prizes
Booths - Tackle Tips - Fishing Stories

"Let's Talk Fishin'" Dinner
Friday, January 27, 1989
Southern Wisconsin Chapter of
Trout Unlimited
For more info: 608-257-6625

Yes!!! I want to attend the 6th Annual Wisconsin Trout Unlimited Awards & Conservation Banquet on Saturday, January 21, 1989, at the Paper Valley Hotel & Conference Center in Appleton, WI. My ticket order is listed below.

Single tickets @ \$25 each: -----

Couple tickets @ \$45 per couple: -----

Total Amount Remitted: -----

In addition, I wish to make the following donation to the State Council Banquet: -----

Name -----

Street -----

City/State/Zip -----

Send all ticket orders to: Mitch Bent
1282 Monterey Trail
De Pere, WI 54115
414-336-4983

Make checks or money orders payable to Trout Unlimited

Chapter Reports continued from page 3.

Marinette County Chapter

The Marinette County Chapter spent a quiet summer. The fishing was poor, of course, because of the drought and many projects in our region were far away.

Monthly meetings have resumed on the second Tuesday of the month at the Dome Cabaret, South of Marinette.

Most of us are now looking forward to the State Council meeting and banquet in January. The banquet is always a fun time and we hope to see many of you there.

Harry Nohr Chapter

Activities for summer 1988 included brush cutting on Otter Creek, allocation of \$3500 for contracted stream improvement work on Otter Creek to be done in 1988, allocation of \$3500 for contracted stream improvement work on the Rock Branch for 1989, and scholarships for four area youths to attend Natural Resources Career Workshops at the Central Wisconsin Environmental Station.