



# WISCONSIN Trout Unlimited

October, 1982 *Quarterly Report*

## NEW STATE COUNCIL OFFICERS ELECTED

Four State Council officers were elected at the July 24th, 1982 State Council meeting held at the Trees for Tomorrow Conservation Camp in Eagle River, Wisconsin. The newly elected officers are:

Tom Flesch, (608) 635-2552, Chairman  
Mitch Bent, (414) 336-4983, Vice Chairman  
Larry Melcher, (608) 839-4744, Treasurer  
Dale Peterson, (414) 725-7825, Secretary

Aside from the elections, two major items were discussed during the July 24th meeting. It was discussed and decided upon that Wisconsin T.U. send a letter to the D.N.R. advocating the usage of trout stamp funds for the purpose of beaver dam removal on Class I and II trout streams when necessary. Also decided, was the purchase of a print intitled "Prairie River Solitude" to be used as both a State Council and chapter fund raiser.

All attending the State Council meeting were very appreciative of the fine job the Northwoods chapter did in hosting this meeting at Trees for Tomorrow.

## STATE COUNCIL MEETING DATES SET

The nexted four State Council meeting dates have been established. They are:  
October 23, 1982, Stevens Point  
February 5, 1983, Stevens Point  
April 30, 1983, (Location Open)  
July 30, 1983, (Location Open)

State Council meetings are open to all T.U. members and all are encouraged to attend.

## THE NEXTED STATE COUNCIL MEETING

Room 112 in the College of Natural Resources, U.W.-Stevens Point will be the location of the October 23rd, 1982 State Council meeting. Coffee and donuts will be served at 9 AM with the meeting to begin sharp at 9:30 AM.

Jim Addis, who is the head of D.N.R. Fish Management, and members of his staff, will be present to discuss the utilization of trout stamp funds in relation to the Wisconsin beaver population.

The October meeting will also be concerned with the election of national directors from Wisconsin. Nominations for the two positions should be submitted to: Dick Wachowski, 310 Water St., Eau Claire, WI 54701. The two national director positions are both one year terms.

As with all State Council meetings it is important that each chapter send a representative to create a link between chapter and State Council activities. There will be reports from chairpersons of Membership, Legislative, Legal, Water Resources, and Fund Raising. These are all committees which need the input of individuals and chapters from throughout the state.

Agendas of the October meeting have been sent to chapter presidents and State Council representatives. If anyone wishes to have additional topics brought up at the State Council meeting they should contact any of the Council officers.

# LINES & LEADERS

## GROWTH in '83

In July I was elected Wisconsin State Council Chairman. In my opinion, I was elected to the most aggressive, fastest growing Council in the nation. Through six months of 1982, Wisconsin's Chapters grew from 13 to 18 and a net increase in membership of 34.2%. The increase is directly attributed to your hard work and concern about our coldwater resources. For the remaining months of 1982 we must try to sign up our suspended members and retain our present membership. In 1983, I will be setting a goal of a 30% increase in membership and the addition of three new chapters. Our national office will be offering incentives for membership recruitment for individuals and chapters.

Our organization is only as strong as our membership. If you have a problem or a suggestion on any subject pertaining to T.U. in Wisconsin, please let me know.

In mid-September some of you may have received letters from political candidates looking for your support. Wisconsin Trout Unlimited Council by-laws state, "The Council shall not promote or oppose the candidacy of any person seeking election to public office". If at any time you are asked to support a political candidate by using the name Trout Unlimited, it is a direct violation of our by-laws. Any letters that were written supporting a political candidate was without my approval and without any action by the State Council.



Tom Flesch

## VOTE! NOVEMBER 2nd

As Vice-Chairman for Wisconsin Trout Unlimited, I'd like to take this moment to talk to you about an important matter.

On November 2, Wisconsinites will go to the polls to cast ballots for people to represent them at all levels of government, from county clerk to governor. We have an OBLIGATION to vote, not just a right. Without participation in this fundamental aspect of American democracy, we weaken our heritage. A citizenry that doesn't care who its rulers are becomes a citizenry whose rulers don't care about them.

In the last two years, government has been trying to avoid its obligation to a quality environment. Lobbyists for dirty air and water have been making themselves heard far too often. This is happening despite the fact that pollsters show that Americans overwhelmingly support strict enforcement of pollution control and protection of our natural resources. Too many politicians have been influenced by these high-paid lobbyists. It's time they got straightened out, and November 2 is the day to do that.

Before you vote, check out your candidates. Do they support strict air and water quality standards? Protection of trout streams, wetlands, and wild areas? Adequate funding for conservation programs? Or, do they use the old line, "I'm all for conservation, BUT..." We have a right to expect from our elected officials a sense of stewardship toward the Earth and its riches. We have not inherited this land from our parents; rather we have borrowed it from our children. Make sure you send that message on November 2. Send it loud and clear so that the politicians can't forget. If YOU don't do it, WHO WILL??



Mitch Bent

# SAGEBRUSH REBELLION HITS WISCONSIN

When Ronald Reagan assumed the office of President of the United States, there was quite a bit of talk about the "SAGEBRUSH REBELLION", the movement to turn back the ownership of huge chunks of Federally-owned land (i.e., land owned by you, me, and every other citizen of the country) to state governments and private citizens. You may have heard about it and thought, "Well, that's out West. It won't bother me in Wisconsin." That's what you think, my friend. And you're wrong!

The U. S. Bureau of Land Management holds title to about 1000 islands in the state of Wisconsin. They range in size from tiny one-tenth acres plots to islands like the 260 acre Plum Island in the boundary of Grand Traverse Island State Park off the tip of the Door Peninsula in Lake Michigan. Most of the islands are river islands, and many of those are in the Wisconsin, Flambeau, and Menominee river systems. The Bureau of Land Management (BLM) is seeking to dispose of these islands in accordance with Reagan's asset management review, designed to determine which properties might be sold or otherwise released to reduce the national debt or trim management costs.

The Wisconsin Department of Natural Resources has submitted a request for about 65% of the islands; a small number of cities and counties have requested some of the properties, too. Mel Hintz of the BLM office in Duluth, Minn., said the plan to shift ownership of the islands to state agencies was an extension of Interior Secretary James Watt's "good neighbor" plan of transferring some U. S. holdings in the West to state governments.

Listed in the next column are the counties where these islands will be released and the amount of acreage involved. It is important that these islands be kept in public ownership. For further information on this land transfer, contact: Bureau of Land Management, Richard Harms, Manager, 125 Federal Building, Duluth, MN. 55802, OR Department of Natural Resources, Edward Faber (Bureau of Real Estate), P.O. Box 7921, Madison, WI. 53707.

<u>COUNTY</u>	<u>NO. OF ISLANDS</u>	<u>ACREAGE</u>
Adams	39	382.20
Ashland	1	5.00
Barron	1	0.60
Buffalo	9	115.80
Chippewa	24	96.40
Clark	28	45.40
Columbia	25	410.90
Crawford	23	162.40
Dane	4	58.80
Dodge	1	1.50
Door	13	20.60
Douglas	8	3.20
Dunn	26	166.10
Eau Claire	5	21.50
Grant	16	98.00
Green	7	3.10
Green Lake	6	22.70
Iowa	16	391.30
Iron	3	1.40
Jackson	27	79.30
Jefferson	5	4.30
Juneau	15	163.20
Kenosha	3	5.00
La Crosse	7	14.60
Langlade	15	7.20
Lincoln	24	28.80
Marathon	17	21.20
Marinette	90	199.40
Marquette	1	0.60
Milwaukee	11	7.80
Monroe	1	2.70
Oconto	20	20.60
Oneida	18	12.40
Outagamie	2	1.80
Ozaukee	23	48.50
Pepin	19	162.40
Polk	13	6.80
Portage	27	55.70
Price	17	23.70
Racine	6	4.10
Richland	6	13.90
Rock	1	10.00
Rusk	37	63.30
Sauk	36	205.63
Sawyer	22	37.60
Shawano	2	27.70
Sheboygan	3	7.30
Trempeleau	3	9.30
Vilas	3	1.70
Walworth	4	8.30
Washington	3	3.00
Waukesha	7	11.90
Waupaca	3	9.60
Waushara	1	0.20
Winnebago	11	19.50
Wood	49	105.70

# Trout Waters of Wisconsin

## East Branch Eau Claire River (Langlade County)



The East Branch of the Eau Claire River has long been a popular trout stream with anglers of Langlade County. Beginning from a small tributary to Summit Lake in the north central part of the county, the East Branch flows to Greater Bass Lake, Water Power Lake, and Deep Wood Lake. It then flows in a southerly direction until it joins the West Branch of the Eau Claire south of Highway 64 west of Antigo to form the main Eau Claire River. The lower 17 miles of the East Branch are considered trout water, with 11 miles from CTH "V" to the junction with the West Branch designated as class II trout water and the 6 miles above "V" called class III.

Twenty road crossings provide access to the East Branch, including CTH's B, C, I, H, and V. Several town roads also cross the stream. Most of the land along the river is privately owned, and permission from the landowners must be obtained in order to get to the stream.

Oddly enough, the East Branch is not one of your classical trout waters. The conditions most often associated with good brook trout streams (deep holes, moderate-to-swift currents, cold water all year round) are definitely lacking here. Summertime stream temperatures reach into the 80's at times. Cover in many areas is sparse or non-existent.

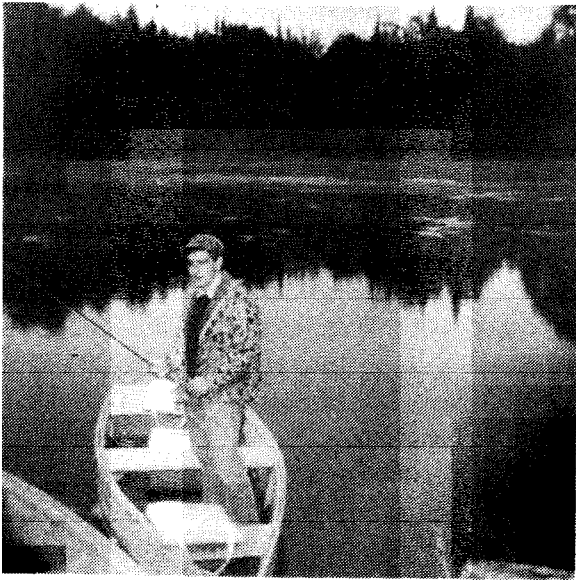
Many areas are shallow and rocky; others are deeper and slower-moving, but with few holes over three feet in depth. Runoff from farmland plagues the stream in spots.

Despite all this, the East Branch produces trout. Lots of trout!! Good catches of brookies are made consistently in spring, early summer, and early fall. Recent years have also seen some very respectable brown trout (20 inches and better) caught. The early season angler is advised to use worms, nightcrawlers, spinners, chub-tails, or wet flies. As the weather warms and insect hatches become frequent, dry-fly fishing becomes the most dependable means of success on the East Branch, as it produces goodly numbers of mayflies and caddis flies. The best patterns that locals suggest using are Adams, Cahill (light & dark), extended-body mayfly imitations, Royal Coachman, and Humpies (Goofus-Bug).

One important thing the East Branch has going for it is the Antigo Chapter of Trout Unlimited. Starting in 1980 and ending in 1981, the Antigo TU group spent two summers doing habitat improvement on the river. The work consisted of strategic placement of over 200 half-logs for production of in-stream cover. The work commenced about one-half mile below CTH "B" and ran for 1½ miles down the river to Blue Bell Road. That stretch was noted for its wide, slow-moving water with little hiding cover for trout. One year after the first batch of logs were in place, DNR fish manager Max Johnson of the Antigo DNR office did a stream shocking survey of the East Branch. What he found brought a wide grin to his face. "The part of the East Branch with the half-log cover showed a superb number of brook trout, many more than before the logs were in. While the fish were not big, it is obvious that the half-logs are providing cover for small trout from predators so that they can reach a larger, more desirable size. Antigo Trout Unlimited is to be commended for tackling a project that DNR could not touch because there were no public lands through which the river flowed." Continued work and monitoring of the East Branch will keep it the fine brook trout water it has always been.

# Trout Unlimited Profile

## Dennis Orgeman (Antigo TU)



TU member, I've changed my opinion a great deal. I still don't agree with all that they do, But I've seen that they not only are willing to give out information, but they're also willing to LIS-TEN. It's made me feel that the average sportsman does have a say with the DNR on policy."

Besides trout fishing, Denny enjoys hunting for grouse, ducks, deer, and rabbits. He's an ardent mink and muskrat trapper and is an active member of the Wisconsin Fur Trappers Association. He is heavily involved in promoting ethics and education among novice trappers. "It was disturbing to see these young kids begin to trap without having even the faintest idea of how to set a trap, where to set it, what to look for, etc. So, several of us in the Antigo area co-ordinated trapper education seminars with the DNR for the youngsters. The response was excellent; the kids are enthusiastic and are learning alot. Since the general public takes a somewhat dim view of the trapper, it's important that we instill the new-comers with knowledge and respect of their prey so that trapping can continue."

Thirty-eight year old Dennis Orgeman took over as president of the Antigo Trout Unlimited chapter when founder and first president Jim Kalkofen moved to Fond du Lac for business reasons. Jim left a big pair of shoes to fill, but Denny has provided more than able leadership for the chapter.

Under Denny's direction, Antigo TU has increased membership over 27% this year, and continues to put on one of the best TU banquets in the state. While work projects on the Hunting River and East Branch of the Eau Claire have been completed, Denny's crew is still active in patrolling the beaver dam situation, plus making plans for improvements on Spring Brook, just north of town. "We felt it would be a good project," he said. "It's close to town and would improve fishing for the kids, plus also enhance TU's image in the community." Also slated for future projects are co-operative efforts with the DNR on the Prairie River and funding of dredging work on the Elton spring pond.

Denny joined TU in 1978 and became involved immediately. He admits some mixed feelings when he signed up. "I knew TU worked along with the DNR. Like many of the folks around here, I was skeptical of the DNR; it seemed that they did as they pleased and never paid attention to anyone else. However, since working with them as a

With several dozen exceptional spring ponds within a half-hour's drive of his home, it's natural that Denny developed a fondness for stillwater angling. When pressed, he admits that his favorite spots are ponds X, Y, and Z (in other words, don't bother asking!). His special flies for the ponds include the Coachman, Dark Cahill, Grizzly King, the Shrimp nymph, and the Gold-ribbed Hare's Ear. Besides the ponds, though, Denny has been known to test the waters of the East Branch of the Eau Claire now and then. Of the East Branch, he warns prospective anglers (with a sly grin), "There are no trout in the East Branch. I try to monitor the stream as much as possible with my rod and flies. If I ever find any trout in there, I'll be sure to let you know." Sure, Denny. Sure.

With the likes of Denny Orgeman and Antigo TU, the trout resources of northern Wisconsin should continue to flourish. We salute them for the job done so far and hope they continue to grow and prosper.

# CHAPTER REPORTS

Aldo Leopold: The first annual Aldo Leopold invitational softball tournament was held July 30, 31, and August 1 at Poynette, WI. Tournament play was organized and run by Bob Tomlinson of T.U. who originated the idea as a way to make money for T.U. Chapter members ran the concession stand and served 18 quater barrels of beer, 16 soda canisters, 62 lbs. of hot dogs, 28 lbs of popcorn and more. In addition to competing for prize money, ball teams also competed for a beer drinking trophy. Good beer sales and friendly competition were the result.

On August 7th six chapter members met for a work project on Crystal Creek near Beaver Dam. Willow brush from Horicon Marsh Wildlife Area was hauled to the site by Don Neuman. Approximately 20 small bundles were placed in the stream on an experimental basis. If the bundles are effective more work days utilizing larger crews will be needed in the future.

During the month of September the Aldo Leopold Chapter in cooperation with Green Bay T.U. held a trout boil at the Beaver Dam Conservation Club.

Antigo: In July the Antigo Chapter officers and directors voted to support the State Council with a loan of \$500 to help fund the printing and distribution of the print, "Prairie River Solitude".

A work day was held on August 28th on the Prairie River with members of the Antigo Chapter combining efforts with D.N.R. personnel and members of the Lincoln County Sportsmans Club. The work involved placing sod over instream devices installed this summer by D.N.R. fishery crews. Sod was placed on approximately 1,700 feet of structures representing a good days work for all involved. Lunch and refreshments were prepared by the Lincoln County Sportsmans Club with Antigo T.U. sharing in the cost. A thank you to Pat Kordus, an Antigo T.U. Director who coordinated Antigo's effort in the project.

The Antigo Chapter was represented at the September 11th trout stocking project sponsored by Cap Buettner's Wolf River Chapter. The project involved scatter planting brown trout from rafts along the Wolf River. Many T.U.ers were on hand to assist and it was a very enjoyable experience.

Coulee Region: The LaCrosse based chapter has recently completed elections of its officers. Dr. Robert Obma was elected President, Jay Thurston - Vice President, Cyrus Post - Secretary, Dr. Josh Goldbloom - Treasurer, and Roger Rung - Stream Improvement Chairman.

Coulee Region is planning several small 8 hour workshops on tying and fly fishing for advanced anglers. At present they are in the planning stage and are in need of assistance from other chapters. If you or your chapter would be interested in helping out contact Dr. Robert Obma, R 3 Box 104, LaCrosse, WI 54601.

Fox Valley: Over the summer Fox Valley members contributed approximately 100 man hours to clear brush from Davis Cr. Some stream bank improvement efforts were included along with rock placement and repair of boom cover devices in the lower section.

A special award has been established by the Fox Valley Chapter to recognize significant contributions and dedication regarding chapter activities and our cold water resources. This memorial award has been established in the name of the late Pat Howlett. Pat was a member of the Fox Valley Chapter and was well known for his skills as an angler and fly tyer as well as for his amiable manner and congeniality. The first presentation of this award was made at the spring banquet and chapter member Del Schwaller was appropriately named as the recipient. Del has been very active and has also coordinated the annual chapter outings with the handicapped.

Congratulations Del.

The annual fishing outing was held in July with a brat and burger feed to follow. Also in July several members assisted in the "Take a Kid Fishing Day" sponsored by Fox Valley area Shopko Stores and held at Jefferson Park in Menasha. Another chapter outing was scheduled for September 18th on the Wolf River at Langlade and proved to separate the dedicated trout anglers from the dedicated bow-hunters.

Green Bay: In Northeast Wisconsin the Green Bay chapter is working to protect and enhance trout resources in three areas where state funds are in short supply.

Over the years the Oconto River has seen most of the chapter's in-stream habitat improvement work. Stream Improvement Chairman Dan Ferron has organized a number of stream project outings which have resulted in nearly 300 hours of habitat work this summer on the First South Branch of the Oconto River near Mountain, WI.

This has been the second year of work on this stretch of stream and when completed, in another year or two, thirty bank cover structures will have been added to a 4,000 foot stretch of stream. All structures will be covered with stable top soil and sod and planted to return the stream to as near a natural condition as possible.

The value of our labor on this project may not be realized by all. In the past, State ORAP funds provided a labor crew which supplemented this \$20,000 trout stamp project. This year no state funds are available and the project has proceeded because of the labor of the Green Bay Chapter.

Two other chapter projects include a possible land acquisition on the Oconto River and supplemental funding of a D.N.R. research effort to assess the effects of removing beaver dams on the North Branch of the Pemebonwon River in Marinette Co.

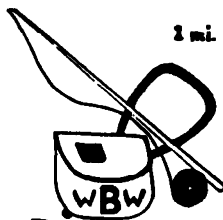


---

Members of the Green Bay Chapter installing bank cover structures on the First South Branch of the Oconto River near Mountain, WI.

---

Ojibseau: 1982 marked the third year of the Ojibseau Chapter's Elk Creek project, being done in conjunction with the D.N.R., Elk Creek Lake Rehabilitation District and landowners. Chapter members are proud to note that all riprapping and bank work has been completed on the three-quarter mile long project area immediately above Elk Creek Lake. The only remaining work to be done on this Operation Restore project is half-log placement, which is scheduled for nexted summer. The chapter has already observed a substantial improvement in bed stability in the project area and have noted a marked decrease in erosion and siltation following rainfalls. The Lake Rehabilitation District plans to dredge the lake this winter and hopefully will see the lake and stream return within a few years to the excellent large trout fishery that existed before erosion and siltation began choking the system. The Ojibseau Chapter is now in the planning stages for additional projects for 1983. (cont'd on page 9)



2 mi. S. on HWY 92, Mt. Horeb, WI 53572  
(608) 437-5465

VERN  
LUNDE'S

HOURS:  
TUES. - SAT. 9-5  
THURS. 9-9  
OR BY APPT.

BAMBOO, WOOD & WICKER

"A COMPLETE QUALITY SHOP FOR  
THE FLY FISHERMAN & FLY TYER"

\* INFORMATION ON LOCAL TROUT FISHING \*

\* A CORTLAND PRO SHOP

\*ORVIS DEALER \*H.L. LEONARD DEALER

SPECIALIZING IN NEW & LIKE-NEW CANE FLY RODS

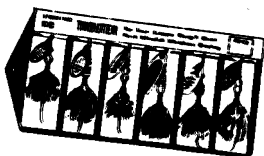


MOLDING COMPANY

PLASTIC FISHING TACKLE BOXES / CUSTOM MOLDING

Mepps

means  
TROUT!



KEITH'S TAXIDERMY

Green Bay 435-6045

Milwaukee 282-3554

Appleton 788-6518

**Bertrand's SPORT SHOP INC.**

GREEN BAY'S EXCLUSIVE SPORTING GOODS STORE

419 N. BROADWAY

(414 - 432-1296)

*Wildwood Gallery*

"ART FOR COLLECTORS"

Mike &  
Gigi Saharsky

1238 East Mason Street

Green Bay, WI 54301

(414) 433-9320

**Eddie's  
Club 'B'**

OPEN SEVEN DAYS A WEEK  
SERVING FROM 5 P.M. TO 1 A.M.

10049 W. Forest Home Avenue

Chapter meeting location on the  
1st and 3rd Tues. of each month.

S.E. WISC. T.U.  
WOULD LIKE TO  
THANK EDDIE'S  
CLUB "B" FOR  
THE FINE FOOD  
AND SERVICE.

**The Fishin' Hut**

Phone  
254-2750

Rod Regel, Owner

BAIT - TACKLE - GUNS  
ARCHERY - LICENSES

Box 513  
Hwy. 12  
Lake Delton, WI

**SUPPORT OUR ADVERTISERS!**

Our advertisers have shown thier support  
of T.U. They deserve our patronage.

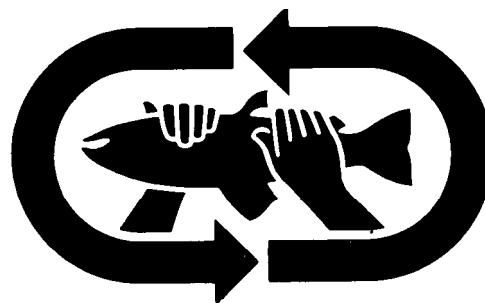
New Release Technique?

In a recent issue of Fly Fisherman  
an angler sent in what could be a  
very significant tip. He noted that  
often times trout do not survive the  
removal of a hook due to their thrash-  
ing and general lack of cooperation.  
His suggestion was, that upon hook  
removal, the angler turn the fish on  
its back while grasping it gently with  
a wet hand. He found that many trout  
hardly move at all during hook removal,  
and upon release swim off all the better.

His techinque has raised some intresting  
questions. Does it work on all trout?  
Does size or species make a difference?  
Does it work on Salmon, Walleyes,  
Muskie's or other types of fish.

In an era of fish management when  
the release of fish will play a ever  
increasing role it is important that  
the angler be made aware of the best  
way to handle his releases.

If you have any information about  
this techinque the Quarterly Report  
would appreciate hearing from you.





The chapter also saw the continuation of the dispute over the City of Eau Claire's plans to run a storm sewer outfall into Lowes Creek, a heavily fished Class II stream on the edge of the city. The Ojibseau Chapter is allied with the Town of Washington, the Lowes Creek Watershed Protection Association and the State Public Intervenor in trying to assure that the stream is not damaged or compromised. Chapter members Ron Koshoshek and Dick Wachowski have been deeply involved in the matter, which has many ramifications, both on the local and statewide levels.

Of course, the chapter continues to monitor area streams and keep on top of issues affecting the area's cold water resources and looks forward to another successful and satisfying year in 1983.

Central Wisconsin: The Chapter tried a first and hosted the Annual National TU meeting which normally is hosted by a State Council. From all reports, Dan Harmon and his Co-chairmen Jim Frank and Richard Osborn, did a great job at everything but bringing in funds for TU. From those who have been to all, or at least most of the 23 National Meetings, the gathering at the Pioneer Inn on the shores of Lake Winnebago in Oshkosh was the best yet, and the three man committee was very tired but proud when they finally went home on Sunday afternoon.

There was also another first this year. The TU Awards Luncheon, held Saturday noon to help shorten the normal long annual banquet night, was judged a success by those attending. If anything the addition of having the awards given at a luncheon helped to focus the proper attention on TU's award winners. Those of the National Directors who had been most opposed to having the luncheon were the first to stop by and tell the committee they had been won over. Giving the awards at a luncheon was the idea of committee member Osborn.

**Join Trout Unlimited  
The Action Organization!**

One major misunderstanding by many present was the fact that a chapter was being host to the meeting rather than a State Council. The only problem that came up during the three days was that of people donating monies or auction items to the State Council. This did cut into the so called profits of the chapter, and when all tallies are complete, Central Wisconsin will be lucky to break even. However the chapter and committee went into the planning of this annual event not with the idea of making all kinds of money, but with presenting the best program they could, and one that was run smoothly. This goal, Central Wisconsin feels was accomplished.

The committee's only wish is that more Wisconsin TUers had come to Oshkosh for the event, they were ready for more but they failed to show. All in all, those of Central Wisconsin who worked very hard Thursday through Sunday, and many, many hours before hand, felt very satisfied with the outcome.

Southern: 1981-82 was a rebuilding year for Southern Wisconsin Chapter, as active members including committee chairmen and several past presidents were lost to 2 new chapters and state council offices. Elections on September 14th resulted in an excellent board being formed, and the coming year looks optimistic. New officers are VP Henry Haugley, Sec. Andy Morton, and Treas. Ken Poniewaz, a recent transfer from Milwaukee area. Bill "Doc" Flader was persuaded to run unopposed as president for a second year. Three new board members were also elected.

One of our most widely-traveled and vivid educators and membership promotors is not a chapter member, but our TU film, Way of a Trout. Despite its being virtually worn out from frequent use, it was seen by at least 19 groups this year totaling 470 people, according to Jeff Starr. This included boy scouts, school science classes, fly-tying classes, and Lions and Optimist clubs. Now that it is available again from National (\$200 for TU chapters) we will replace our copy, and strongly recommend that every chapter obtain and put to maximum use this excellent film. (con't on page 10)

About 15 members completed a fence repair project on public land near Vermont Creek in Dane Co. on one of the hottest and most humid mornings of the summer. Several later suffered blistering and itching arms, probably from contact with wild parsnip, one of those relatively unknown weeds that can cause all kinds of grief to the unwary, even those who don't get poison ivy.

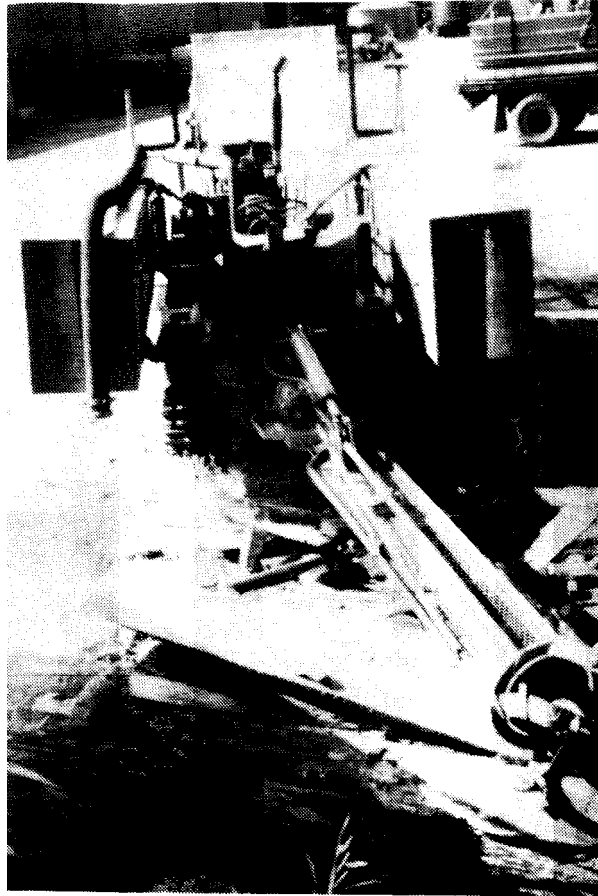
Southeastern: In November 1981 the Southeastern Wisconsin Chapter, with the approval of the D.N.R., planted 22,000 brook trout eggs in the heavily utilized Bluff Cr. The eggs were donated by the D.N.R. Gravel was donated by a local construction firm. The Vibert boxes came from an Illinois chapter with S.E. Wisconsin providing the labor under the coordinating of Tim Bolling.

On Sept. 20 and 21, 1982 the D.N.R. did an electro-shocking survey of the stream. A total of 57 five to seven inch brook trout were taken in that survey. Male brookies were showing signs of sexual maturity. Prior to the 1981 Vibert box planting no brook trout were known to exist in Bluff Cr. Needless to say, the chapter was extremely happy with the results in light of the exceptional growth rates that the fish exhibited.

Also taken during the Bluff Cr. survey were a number of large brown trout, the largest being 23 inches. Fish in the 10 to 14 inch range had an extremely low count in the survey. The Bluff Cr. surveys over the year have shown the near absents of 10 to 14 inch fish.

Since late summer the S.E. Wisconsin Chapter has been considering donating funds to the D.N.R. for the purchase of a portable dredge. Area Fish Manager Randy Schumacher submitted detailed information to the chapter concerning the dredge and potential planned projects.

The dredge could be used for a variety of coldwater related projects. The most important use being the creation of additional productive spring pond acreage near the population centers of Southeastern Wisconsin.



The portable dredge planned to be purchased by the D.N.R.

Several project sites under D.N.R. consideration are: The headwater springs of the South Branch of the Scuppernong River (1.3 acres), McKlintok Springs (0.5 acres), Railroad Springs (3.0 acres), Otter pond (5 acres- Sheboygan Co.).

On Sept. 21, 1982 the Southeastern Wisc. Chapter voted unanimously to donate \$5,500 to the \$12,000 needed by the D.N.R. to complete the purchase. A breakdown of funding is as follows:

D.N.R.- \$5,000  
Wisconsin House Outdoorsmen - \$1,000  
Green Bay Chapter of T.U. - \$500  
Southeastern Chapter of T.U. \$5,500

With the completion of this grant, T.U. will have donated \$10,000 to the D.N.R. for the improvement of the coldwater resource in Southeastern Wisconsin in 1982. Southeastern is proud that they are responsible for \$7,500 of that total. (cont'd on page 12)

# TROUT UNLIMITED MEMBERSHIP

As this is written, Wisconsin Trout Unlimited has about 1430 paid-up members on our roster (as of the August 12th printout from TU National). We had reached a high of 1510 members in June, but since then have plummeted due to the high number of non-renewals we have experienced this year. TU National will be conducting a renewal program via mail beginning in October, and TU chapters across the country are being encouraged through a special rebate program to get back their members who've let their memberships lapse.

In Wisconsin, we are concentrating on personal contact of delinquent members from chapter membership chairmen and officers. All TU'ers are encouraged to get these delinquent members back into TU. Furthermore, we are urging you to sign up some more NEW members before the year ends. Consider, perhaps, giving a fishing friend a membership in Trout Unlimited for a Christmas gift; TU will have more members and your friend will receive a valuable gift!

Listed in the adjoining column is a comparison of active members per chapter between Feb., 1982, and August, 1982, along with the per cent increase of each chapter. An asterisk (\*) beside a chapter means it has had members transferred from it to other new chapters (Aldo Leopold, Shaw-Paca, Oconto River Watershed, Chequamegon, and Blackhawk). At this time, we wish to welcome the BLACKHAWK CHAPTER of TROUT UNLIMITED to the fold. Its headquarters is the Janesville area, and its leaders are: Stu Brandes (Pres.), Don Schroeder (VP), and Larry Becker (Sec.-Treas).

CHAPTER	Members (2/82)	Members (8/82)	% In- crease
Wolf River(*)	17	18	+ 5.9
South. WI (*)	246	178	- 27.6
SE Wisc. (*)	141	183	+ 29.8
Green Bay (*)	90	184	+ 104.4
Central WI(*)	183	173	- 5.8
Fontinalis(*)	11	17	+ 54.5
Kiap-TU-Wish	86	103	+ 19.8
Fox Valley	74	99	+ 33.8
Ojibseau	51	53	+ 3.9
Northwoods	54	75	+ 38.9
Harry Nohr	32	29	- 9.3
Coulee Region	19	20	+ 5.3
Antigo	72	92	+ 27.8
Aldo Leopold	**	102	
Shaw-Paca	**	46	
Chequamegon	**	23	
Oconto River	**	32	
Blackhawk	**	**	

\*\* = not listed.

Please note that the apparent large drops in membership in Southern Wisconsin and Central Wisconsin are due in part to large numbers of transfers to different chapters. Both chapters recruited good numbers of new members.

Plans for the coming year include more new members, establishment of new chapters in areas like Wausau-Merrill, Hayward, Black River Falls, Richland Center, and Marinette, and renewal of present members. Your individual help in these areas will insure continued success for Wisconsin Trout Unlimited and the coldwater resource!

## Join Trout Unlimited

**YES, I believe in the goals & objectives of Trout Unlimited, a national organization, and wish to be enrolled as a member. \*Enclosed please find \$ \_\_\_\_\_**

**NAME** \_\_\_\_\_

**ADDRESS** \_\_\_\_\_

**CITY** \_\_\_\_\_ **STATE** \_\_\_\_\_ **ZIP** \_\_\_\_\_

**Please Indicate**

<input type="checkbox"/> New	<input type="checkbox"/> \$7.50 Optional Sr. Member (over 65)	<input type="checkbox"/> \$25.00 - \$1,000 Business Member
<input type="checkbox"/> Renewal	<input type="checkbox"/> \$7.50 Junior Member (under 18)	<input type="checkbox"/> \$25.00 Sponsoring Contributor
	<input type="checkbox"/> \$15.00 Regular Member	<input type="checkbox"/> \$100.00 Century Contributor
	<input type="checkbox"/> \$20.00 Family Membership	<input type="checkbox"/> \$300.00 Life Member

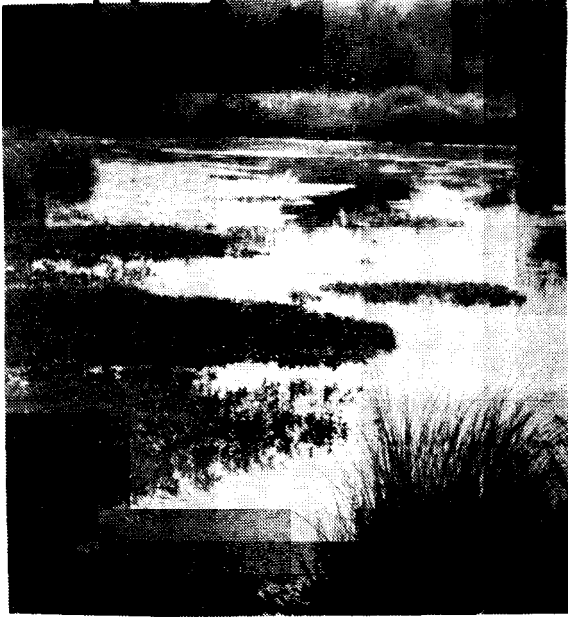
Membership No. \_\_\_\_\_

Chapter \_\_\_\_\_ Sponsor (if applicable) \_\_\_\_\_

Member and Contributor's receive a year's subscription to TROUT Magazine.  
Contribution in the amount of \_\_\_\_\_ enclosed.

**\*ALL CONTRIBUTIONS OVER \$2.50 ARE TAX DEDUCTIBLE. Make checks payable to Trout Unlimited.**

Mail to: Membership Services  
Trout Unlimited  
P.O. Box 1944  
Washington, D. C.  
20013



The spring pond headwaters of the Little South Branch of the Scuppernong River near Eagle, WI

The Southeastern Chapter is also planning a work outing for Paradise Sprgs., an Operation Restore funded project. That outing is planned for this fall.

(12)

Spring Hearing Note

This April, at the Conservation Congress Hearings there will be a proposal to reduce the daily creel limit from 10 trout per day to 2 on streams in Southeastern Wisconsin.

This regulation is long overdue and T.U. should be working with other organizations throughout Wisconsin to assure its passage.

QUARTERLY REPORT

Editor - Bob Retko

Asst. Editor - Mitch Bent

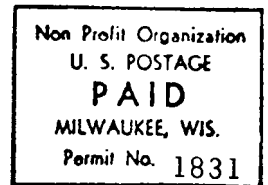
Contributors:

- Earl Little
- Dennis Orgeman
- Dr. William Flader
- Lee Snyder
- Dr. Robert Obma
- Dick Wachowski
- Tom Mertens
- Richard Osborn

Typing:

- Mitch Bent
- Bob Retko
- Laura Retko

Southeastern Wisconsin  
Chapter of Trout Unlimited  
6938A N. Raintree Dr.  
Milwaukee, WI 53223



0347495 WI 061 RE 0882

LARRY MEICHER  
2308 COTTAGE GROVE ROAD  
COTTAGE GROVE, WI 53527



**Join Trout Unlimited**  
*The Action Organization!*

